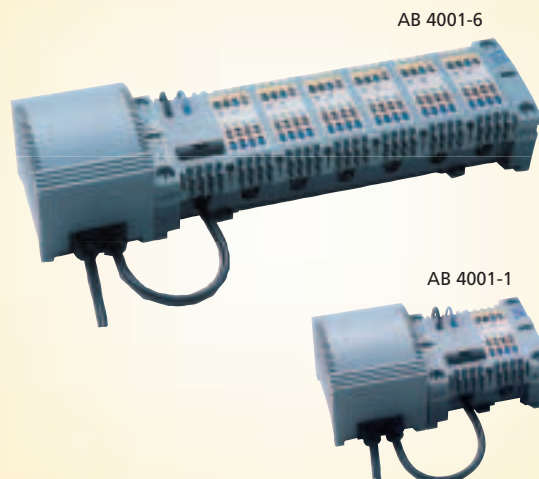


## Alpha-Basis 24 V AB 4001-6 / AB 4001-1

Alpha-Basis 24 V is a connection unit for connecting the room thermostats (e. g. Alpha-Thermostats) to the actuators (e. g. Alpha-Actuators). Furthermore, the Alpha-Basis provides the operation voltage for the connected devices.

Predominantly, it is used at the heating circuit distributor of a floor heating. The Alpha-Basis is appropriate for new constructions, as well as for the re-fitting of residential and commercial buildings with already existing floor heating systems.

In order to adapt the heating system individual to requirements, various extension modules (e. g. TimerModule) can be connected to the integrated interface of the Alpha-Basis. This modular structure allows an extension of the Alpha-Basis at any time. The spring/clamp connections minimize installation time.



### Features

- Operating mode indicators (voltage supply, fuse)
- Function indicator (operating condition of thermostats)
- Connection by screwless spring/clamp terminal connection
- Clear arrangement of the connection line with cable grip
- Extendible modular
- Also available as 1-room basis

### General Information

#### Type Designation

AB 4001-6 for max. 6 room thermostat  
AB 4001-1 for max. 1 room thermostat

#### Scope of Supply

1 x Alpha-Basis 24 V, including transformer  
1 x Manual  
2 x 2 screws  
4 x Distance sleeves

#### Accessories

- Program plug AB PS 4000 (optional)

#### Extension Options

- ActuatorModule AM 4000
- PumpModule PL 4000
- ThermostatModule RM 4000
- TimerModule TM 1000

#### Connection Recommendations

- Alpha-Actuator Standard AA 4001, Alpha-Actuator End-Switch AA 4021
- Alpha-Thermostat Standard AR 40...S, Comfort AR 40...K  
Control AR 40...C, Heating/Cooling AR 40...HK

#### Ordering Information

Place order with specialised wholesale trade.  
(For more detailed information see: [www.moehlenhoff.de](http://www.moehlenhoff.de))

### Application & Function

The Alpha-Basis 24 V is applied for the installation of floor heating systems in new constructions or in the modernisation of privately owned residences, office buildings, multipurpose halls, and also for modernising and refitting older buildings.

In most cases, the Alpha-Basis is mounted in the heating circuit distribution cabinet, directly on the wall, or on a mounting bracket. It is designed for the installation of 6 room thermostats (e. g. Alpha-Thermostats) and a total of 14 actuators (e. g. Alpha-Actuators).

The screwless and colour-coded connection technique (spring/clamp terminal connection) allows simple and quick installation. All electrical lines are secured with cable grips. The guides of the cable grips as well as the clear arrangement allow a trouble-free and quick installation of the Alpha-Basis.

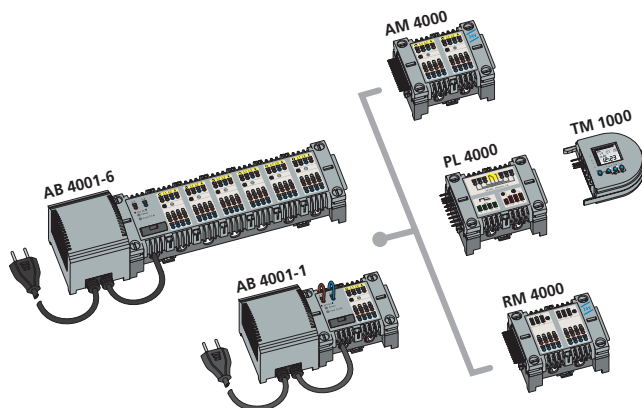
Control displays inform the user about the operating state of the thermostats, the operating voltage and the fuse state.

The integrated interface allows the extension of the Alpha-Basis with optionally available modules. The TimerModule, for example, in particular in connection with the Alpha-Thermostats Standard and Comfort, allows automatic temperature setback using two separate heating programs.

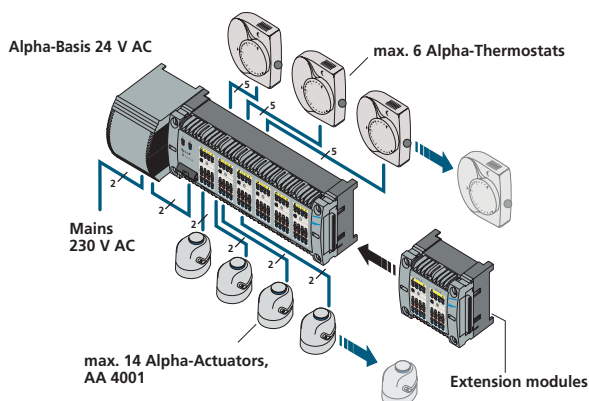
The entire 24 V control system is marked by easy installation, enormous system security and high controlling comfort. It allows a precise and comfortable temperature control in different heating zones within a building.

## The Alpha-System 24 V

### Extension Options

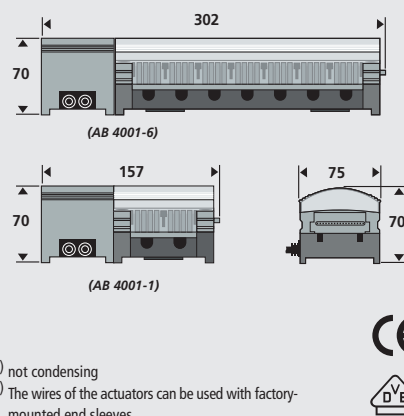


### Connection Recommendations



Technical Data

Type	AB 4001-6	AB 4001-1
Operating voltage	230 V / 24 V AC secondary	230 V / 24 V AC secondary
Max. power input	50 W	50 W
Fuse	T 2A H	T 2A H
Max. number of thermostats	6	1
Max. number of actuators (about 2 W)	14	4
Heating programs, optional	2	2
Dimensions (mm) H / W / L	70 / 75 / 302	70 / 75 / 157
Weight, including transformer	1.700 g	1.350 g
Protection class	II	II
Protection type	IP 20	IP 20
Ambient temperature	0 to 50°C	0 to 50°C
Storage temperature range	-25 to 60°C	-25 to 60°C
Relative humidity	max. 80% <sup>1)</sup>	max. 80% <sup>1)</sup>
Applicable wire sections		
Solid wire	0.5 – 1.5 mm <sup>2</sup>	0.5 – 1.5 mm <sup>2</sup>
Flexible wire <sup>2)</sup>	1.0 – 1.5 mm <sup>2</sup>	1.0 – 1.5 mm <sup>2</sup>

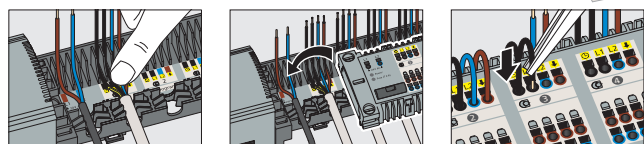


1) not condensing  
2) The wires of the actuators can be used with factory-mounted end sleeves.

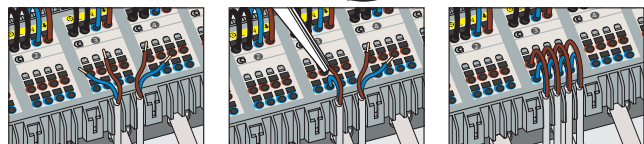
Please take information on the start-up and on the controlling operation from the manual included in the scope of delivery.

Planning and Installation Notes

Connection of Room Temperature Thermostats

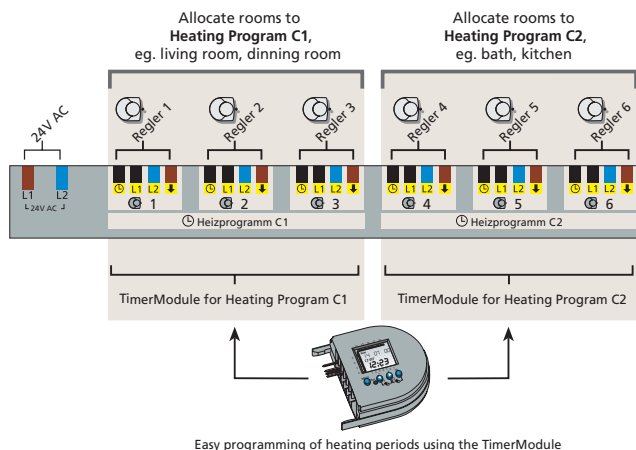


Connection of Actuators



Heating Programs

In connection with the Alpha-Thermostat Standard or Comfort and the TimerModule, an automatic temperature setback is possible, using two separated heating programs.



Easy programming of heating periods using the TimerModule

**Note:**  
Please consider that a proper function of the Alpha-Basis with the TimerModule is only possible in conjunction with the Alpha-Thermostats Standard and Comfort.

Product Overview Alpha-Basis Connection System

Devices

The Alpha-Basis consists of a flexible and broad product portfolio. Following versions are available:

- Alpha-Basis 230 V ..... AB 2000-6 / AB 2000-1
- Alpha-Basis 24 V ..... AB 4001-6 / AB 4001-1
- Alpha-Basis RC ..... AB 4061-6 / AB 4061-12
- Alpha-Basis 0-10 V ..... AB 5001-6
- Alpha-Basis EIB ..... AB 7001-6 / AB 7001-12

For further information and data sheets see the internet:  
[www.moehlenhoff.de](http://www.moehlenhoff.de).

Alpha-Basis Matrix

AB 2000	•	•	•	•	•
AB 4001	•	•	•	•	•
AB 4061			•		•
AB 5001					•
Ab 7001	•	•	•	•	•
	AM 2000/4000	HK 4000	PL 2000/4000	RM 2000/4000	TM 1000